

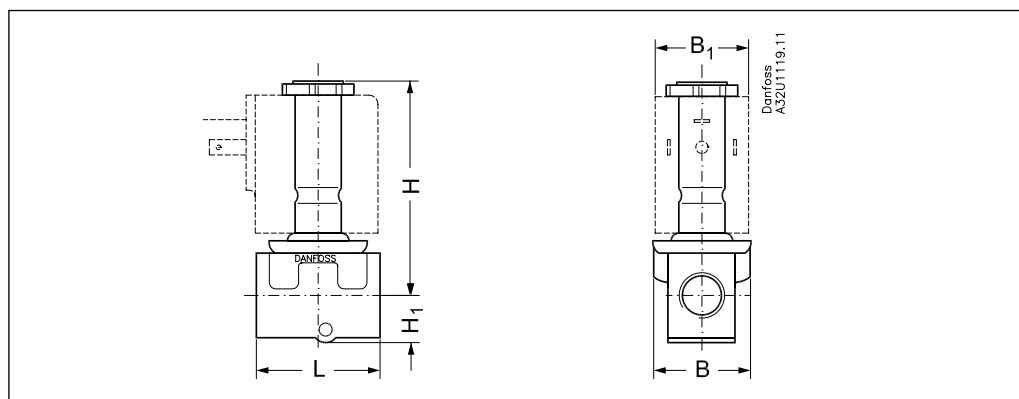
Ordering
**EV210B NO versions for AC and DC current:
Brass bodies**

Conn. ISO 228/1	Seal material	k _v value [m ³ /h]	DN [mm]	Media temp		Type designation		Code no. without coil	Permissible differential pressure(bar)/Coil type ²⁾							
				Min °C	Max. °C	Main type	Specification		BA		BD		BB		BG	
									9W a.c.	15W d.c.	15W a.c.	10W a.c.	18W d.c.	12W a.c.	20W d.c.	
G 1/8	EPDM ¹⁾ FKM	0.08 0.08	1.5 1.5	-30 -10	+120 +100	EV210B 1.5B EV210B 1.5B	G 18 E NO000 G 18F NO000	032U3630 032U3631	30	30	30	30	30	30	30	
									30	30	30	30	30	30	30	
	EPDM ¹⁾ FKM	0.15 0.15	2.0 2.0	-30 -10	+120 +100	EV210B 2.0B EV210B 2.0B	G 18 E NO000 G 18F NO000	032U3632 032U3633	12	12	12	12	12	12	12	
G 1/4	EPDM ¹⁾ FKM	0.30 0.30	3.0 3.0	-30 -10	+120 +100	EV210B 3.0B EV210B 3.0B	G 18 E NO000 G 18F NO000	032U3634 032U3635	5	5	5	5	5	5	5	
									5	5	5	5	5	5	5	
	EPDM ¹⁾ FKM	0.15 0.15	2.0 2.0	-30 -10	+120 +100	EV210B 2.0B EV210B 2.0B	G 14 E NO000 G 14F NO000	032U3636 032U3637	12	12	12	12	12	12	12	
G 1/4	EPDM ¹⁾ FKM	0.30 0.30	3.0 3.0	-30 -10	+120 +100	EV210B 3.0B EV210B 3.0B	G 14 E NO000 G 14F NO000	032U3638 032U3639	5	5	5	5	5	5	5	
									5	5	5	5	5	5	5	
	EPDM ¹⁾ FKM	0.55 0.55	4.5 4.5	-30 -10	+120 +100	EV210B 4.5B EV210B 4.5B	G 14 E NO000 G 14F NO000	032U3640 032U3641	2	2	2	2	2	2	2	
									2	2	2	2	2	2	2	

1) 140°C / 3.6 bar low pressure steam, orifice DN 1.5 - 4.5.

- Low pressure steam: DN 1.5 - 3 Use coil type BB or BG.
DN 4.5 Use coil type BG

2) Pressure range can be extended to use in rough vacuum, typically up to 99% vacuum (10mbar), depending on the application.

Dimensions and weight


Type	L [mm]	B [mm]	B ₁ [mm]			H ₁ [mm]	H [mm]	Weight without coil [kg]
			Coil type BA/BD	Coil type BB/BE	Coil type BG			
EV210B 1.5/2B NO	35.0	34.0	32	46	66	12.0	70.0	0.15
EV210B 3/4.5B NO	38.0	34.0	32	46	66	11.0	70.0	0.20